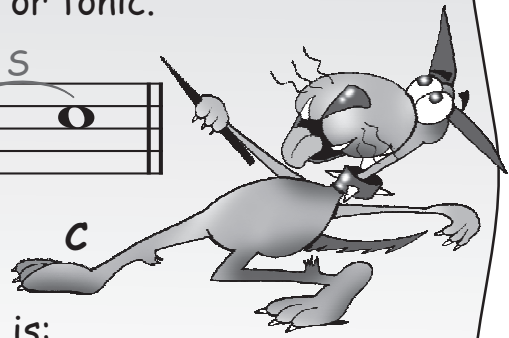
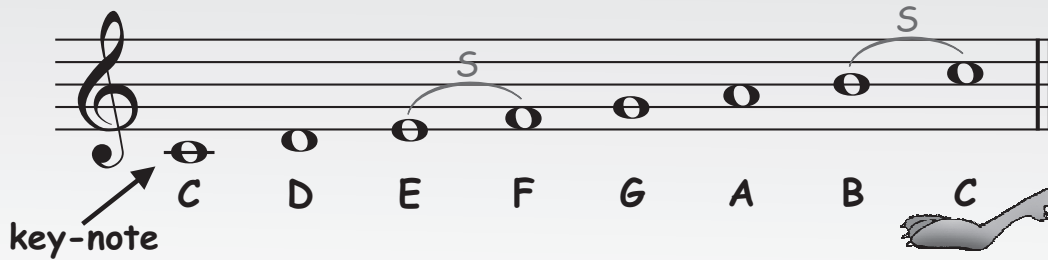


C Major Scale

A scale is a series of 8 notes beginning and ending with the same letter name.
The first note is called the key-note or tonic.

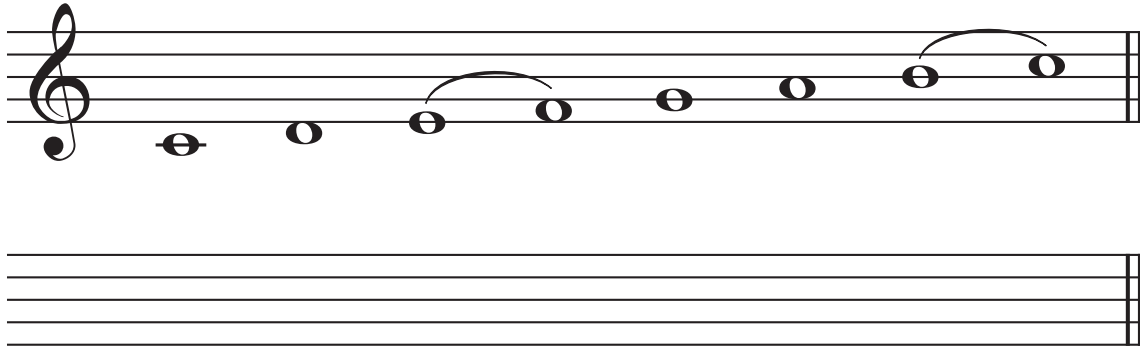


The pattern for all major scales is:

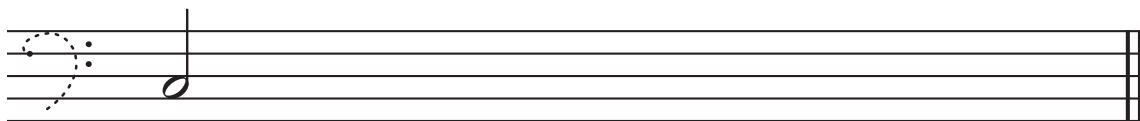
Tone, Tone, Semitone, Tone, Tone, Tone, Semitone.

The semitones always occur between notes 3-4 and 7-1 (7-8) in a major scale.

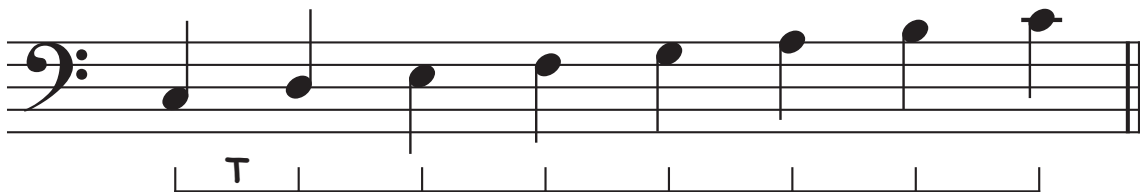
★ Copy this C major scale as neatly as possible. Mark the semitones with slurs.



★ Complete this C major scale on the bass staff using minims.
Mark the semitones with slurs.



★ Finish marking the tones (T) and semitones (S) in this C major scale.



★ Complete the following:

A scale consists of ___ notes. The first note of a scale is called the _____.

The semitones in a major scale occur between notes _____ and _____.