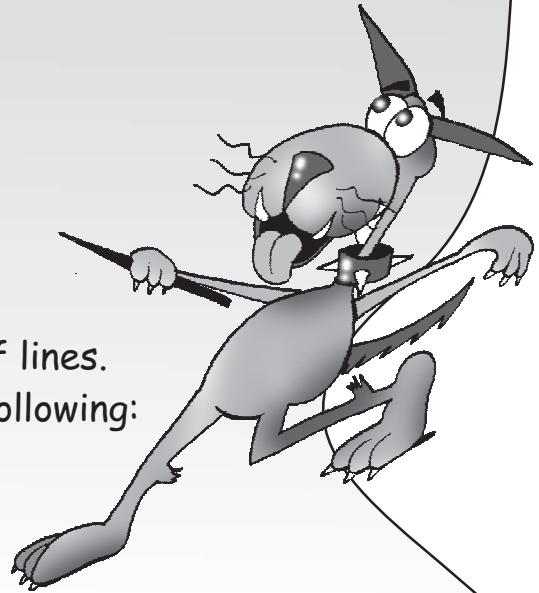
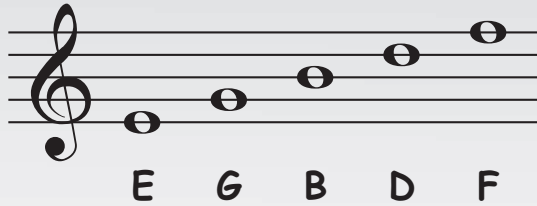


Treble Staff Lines



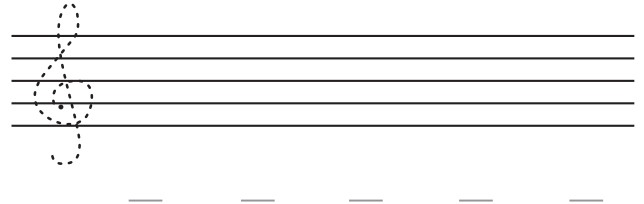
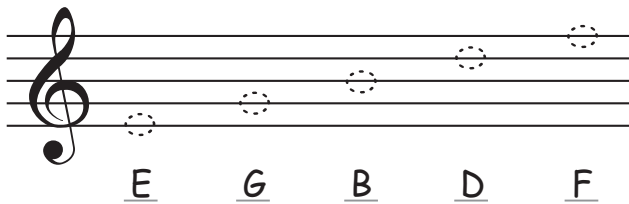
Use a rhyme to remember the treble staff lines.
Either make up your own or use one of the following:

Empty Garbage Before Dad Flips
Elephants' Great Big Dirty Feet
Every Good Boy Deserves Fruit

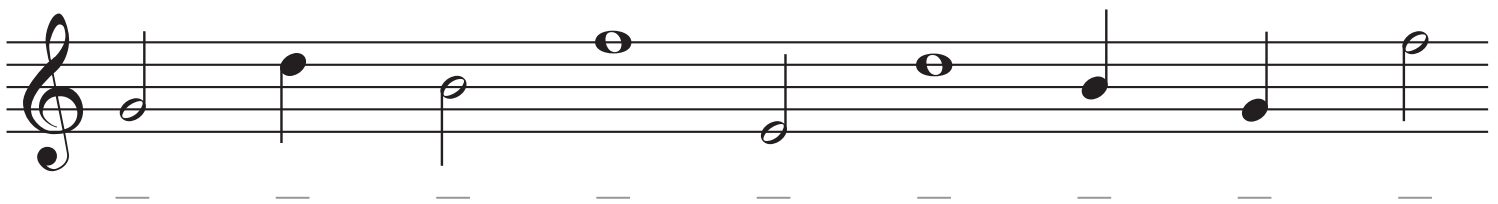
★ My rhyme for the treble lines is:

E _____ G _____ B _____ D _____ F _____

★ Trace, then copy the treble staff line notes (E, G, B, D, F). Name each note.



★ Name these notes.



★ Draw a treble clef, then write these notes on lines. Use semibreves.



★ Complete the following:

The treble staff has _____ lines. They are called _____.